

Last updated: 05/10/2021

«10:10» TECHNICAL SHEET

1. Team :

The team for this performance is made of 5 or 6 people:

- 3 dancers
- 1 musician (percussionist)
- 1 technician
- 1 choreographer / administrator (where appropriate)

2. Duration of the performance + Gage:

50 minutes without intermission – 200 spectators (230 max)

3. Decor: (brought by the company)

- 7 white dance carpet lays of 1m60 x 8m.
- 1 drums
- 6 Stairville LED Matrix Blinder 5x5 DMX + flight
- A smoke machine
- 100 kg of sand

4. Plateau:

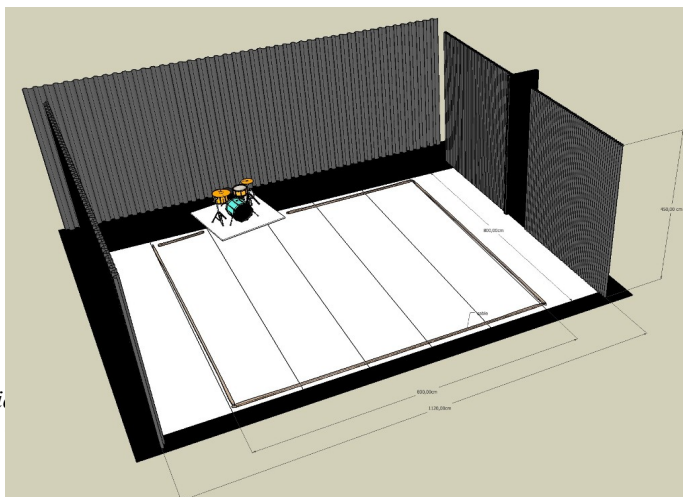
Minimum size of the stage: 10 meters in width from the left wall to the right wall (11M20 ideally), 8 meters deep (except public)(10m ideally) and 4 meters high(6m ideally).

**A black background should close off the stage completely (if it is not black and clear or if it causes too much resonance from the drums). -Black Box-
The floor must be perfectly clean.**

If the floor is not black and in good condition, it must be covered with a black dance floor.

THE FLOOR MUST BE IMPERATIVELY IN WOOD !!!!!

If not, please notify the company



If there is no possibility of an Italian-style hanging, you will have to practice an opening (exit) in the German court, and make sure you have no discovery.

A back right and left exit will have to be arranged using black pendrillons.

TWO WHITE TAPE ROLLS AND ONE BLACK FOR DANCE MATS SHOULD BE SUPPLIED BY THE PLACE OF HOME !!!

5.Light: (28 channels 2 KW(except public light))

We ask :

- 1 lightning board
- 2 profiles 1 KW medium with knives, type 614 sx juliat.
- 15 PC 1KW (17 ideally)including 8 with flaps
- 19 PAR 64 solo (cp62)
- 4 asymétric ADB ACP 1001 cyclorama
- !!!1 DMX BACK RIGHT GROUND AND ONE DMX AT GRILL !!!

Gels :

- L205 : 4 ADB ACP 1001 cyclorama
- L201 : 10 pc 1kw (12 ideally), 19 PAR 64,
- L202 : 5 pc 1kw, 2 prof. 1kw

DIFF :	R104 :	19 PARS
	R119 :	15 Pc 1kw
		2 profiles 1kw

6.Sound :

We ask :

Broadcast system: -A pair of left and right speakers at the front, a pair of left and right speakers to the back on the ground. The speakers will be of type MTD 112.

- A sub (if possible)

We can do without a sound table. The 4 speakers can be directly plugged into our sound card (Jack)

A FIFTH INDEPENDENT EXIT WILL BE SENT IN THE BEATER'S HELMET (Garden backdrop).

Amp: adapted to the broadcast system.

REM: The company has an HK Audio Broadcast system. We use it when the material of the welcoming place is of inferior quality.

7.Lodges:

-1 lodge accommodating 4 people; heated, equipped with a mirror, a sink, a shower (if possible), a IRON and 4 chairs

8.Planning:

Montage: 7 hours with 2 light manager, 1 machino (in Italian theater), 1 sound (last hour)

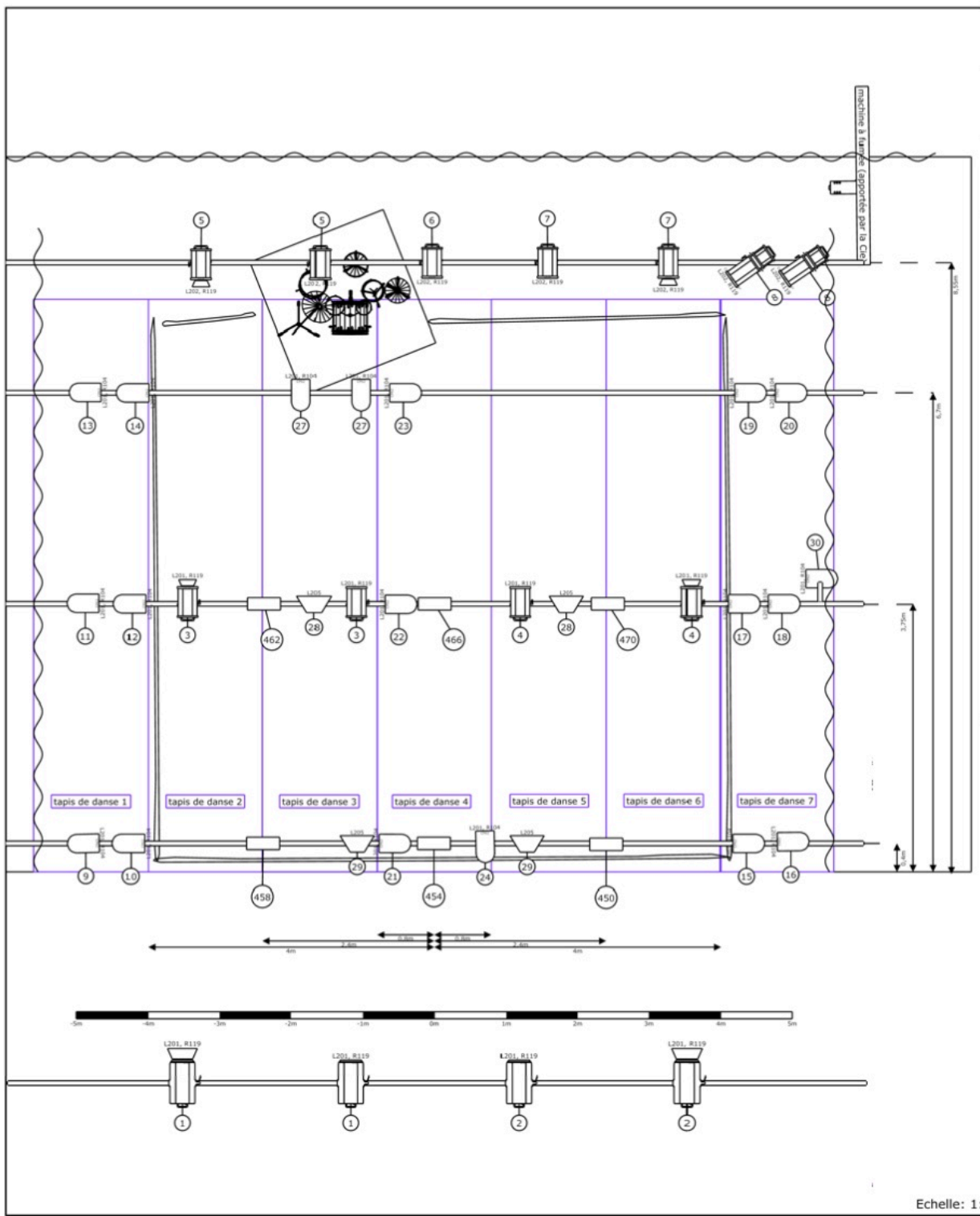
1 meal is required for lunch on the day of assembly

Disassembling: 1 hour get out included with 1 machino

9.Contact :



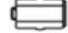

tech : Fred. Vannes : +32(0)477.200.356
fred.vannes@nyash.be

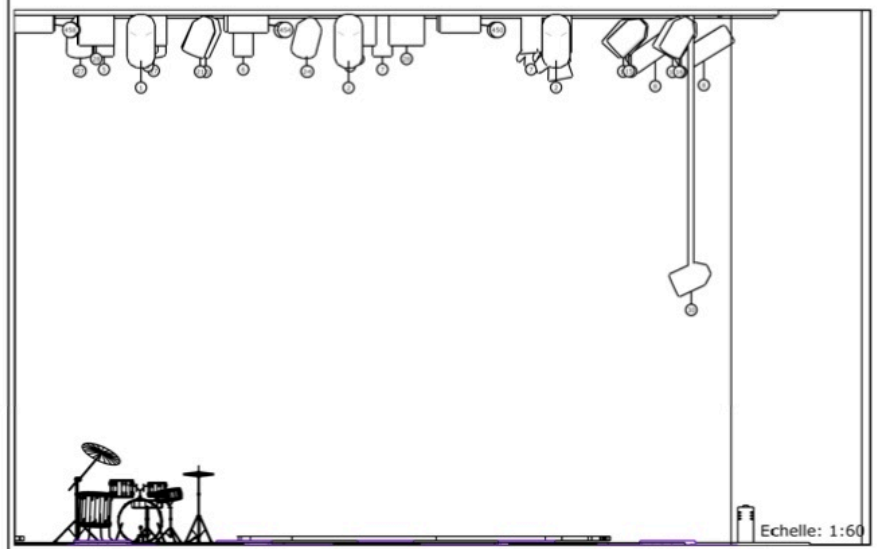
diff : Anna Giolo : +32 (0)477 49 89 19
contact@adlibdiffusion.be



Projet	10:10	NÿASH DANSE JEUNE PUBLIC
Créateur Lumière	Fred Vannes	
Mise à jour	23/11/2021	

liste de projecteurs

-  PAR 64 cp 62 (19)
-  PC 1kw (9)
-  LED Matrix Blinder 5x5 DMX (apportés par la compagnie) (6)
-  ACP 1KW (4)
-  PC 2kw (4)
-  Découpe (614SX 16°-35°) (2)



PROJECTEURS

#	Note	Évaluation	Repère
4	ACP	1kW	
2	Découpe 614 sx	1kW	
19	PAR 64 CP62	1kW	
9	PC	1kW	
4	PC	2kW	
6	LED Matrix Blinder 5x5 DMX	96W	apportés par la compagnie
		42kW 576W	

GELATINES

#	Note	Filtres	Repère
19	PAR 64 CP62	L201, R104	
8	PC	L201, R119	
2	Découpe 614 sx	L202, R119	
5	PC	L202, R119	
4	ACP	L205	
6	LED Matrix Blinder 5x5 DMX		apportés par la compagnie

Accessoires

#	Référence
6	volet 4 faces