

update: 04/06/2021

«LLUM »

TECHNICAL SHEET

1.The team:

The team for the show consists of 3 or 4 people:

- 1 dancer
- 1 technician on stage
- 1 sound technician in the audience
- 1 administrator / promoter. (if applicable)

2.Duration of the show :

50 minutes without intermission – 100 spectators (120max)

3.Décor: (brought by the company)

- 1 self-supporting metal frame
- 1 flightcase on wheel 98x40x48
- 2 x mirrors balls (30 and 15 cm in diameter)
- an 8-step stepladder
- a projo foot (windup style)
- 2 plates on wheels
- 1 bromizer on wheels
- 1 fan on casters
- a projo foot (windup style)
- 1x 713XS profile
- 1 fog machines

4.Plateau:

Minimum dimensions of the stage: 8 meters in width from the left wall to the right wall, 6 meters deep (excluding the audience) and 5,5 meters high.(ideal dim.: 10m x 7m x 5,5m).

A black background should completely close the background of the scene(if the background is not black and clean).

At the right and at the left we will have black curtains that will lead to a black box

THE FLOOR MUST BE MADE OF WOOD

THE FLOOR MUST BE COMPLETELY COVERED WITH A BLACK DANCE FLOOR

THE SPECTATORS MUST BE ABLE TO SEE THE FLOOR OF THE STAGE.

5.Light: 24 channels 2 KW (except public light))

We ask :

- 2 profiles 1 KW medium with knives, type 614sx juliat
- 5 profiles 1 KW short with knives, type 613sx juliat+1gobo holder
- 10 PC 1KW with flaps
- 13 PAR 64 solo (13 x CP62, 2x CP61)
- 1 PAR 36 (F1)
- 2 asymétric ADB ACP 1001 cyclorama
- !!!UN DMX RIGHT GROUND !!! (stage management is done from the

set) ++ 2 DMX cables 2m 5pin

We bring a computer with its DMX card as an organ set

Gels :

L201 : 2 PC 1kw + 2 PAR 64

L134 : 4 PAR 64

L195 : 4 PAR 64 + 2 PC 1Kw

L132 : 1 PC 1kw

L106: 1 PC 1kw + 1 PAR64

L200 : 2 ACP 1kw + 2 PAR64

L206 : 4 PC 1kw

DIFF : R132 : 4 PC 1kw + 1 prof.

6.Sound:

We ask:

Broadcast system: -A separate pair of speakers placed on the ground far from the right and left, a separate pair of speakers facing the right and left. The speakers will be MTD 112.

- A sub (if possible)

We can do without a sound table. The 4 speakers can be directly plugged into our sound card (Jack)

Amp: adapted to the broadcast system.

REM: The company has an HK Audio Broadcast system. We use it when the material of the welcoming place is of inferior quality.

7.Lodges:

-1 lodge accommodating 2 people; heated, equipped with a mirror, a sink, a shower (if possible), a IRON and 2 chairs

8.Planning:

Installation: 8 hours

-2 light manager + 1 stagehand when it comes to an Italian theater, 1 sound (2 last hours)

The last hour must be 1 technical spinning !! (necessary to check that technically everything works)

THE REPRESENTATION CANNOT BE DONE ON THE SAME DAY AS THE ASSEMBLY !!!!!!!!

Disassembling: 1 hour get out included with 1 machino

9.Contact :


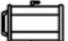




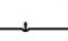



tech : Fred. Vannes : +32(0)477.200.356
fred.vannes@nyash.be

diff : Anna Giolo : +32 (0)477 49 89 19
contact@adlibdiffusion.be

Légende

- commun a tout gels
- pendrillons
- perches
- plateau
- projos
- projos sol
- sol
- tapis de danse

Projos

-  PAR 64 CP 62 (13)
-  PC 1 KW (8)
-  613SX 28°-54° (3)
-  613SX 28°-54° (2)
-  Quartz 1 kw (2)
-  PC 1 KW (2)
-  614 SX (2)
-  ACP 1KW (2)
-  Tour-Hazer II (apportée par la compagnie) (1)
-  713 SX (apportée par la compagnie) (1)

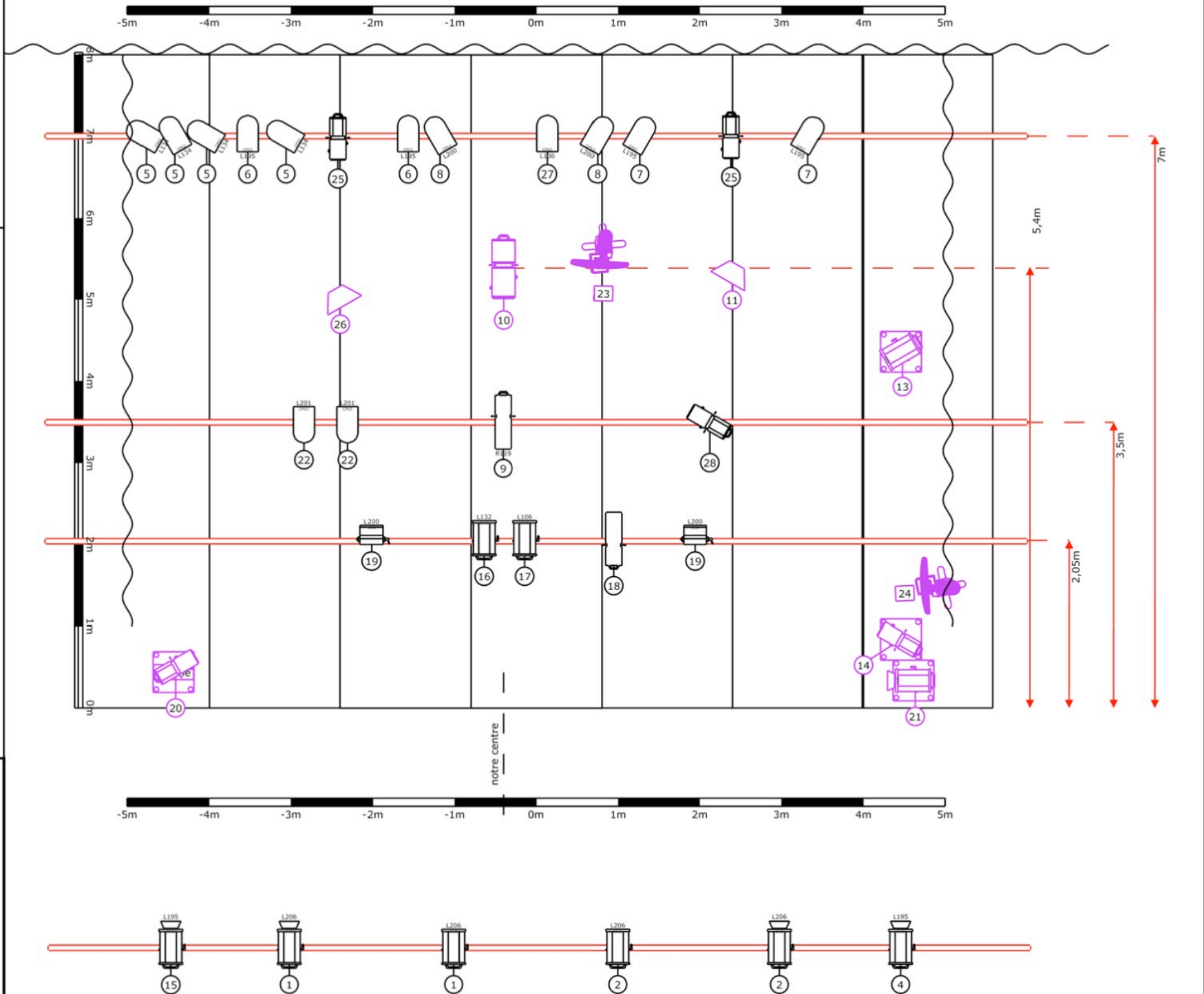
Projet

LLUM

Compagnie:

NÿASH
DANSE
JEUNE PUBLIC

Créateur Lumière
Fred Vannes



10:10

implantation SON

NYASH
DANSE
JEUNE PUBLIC

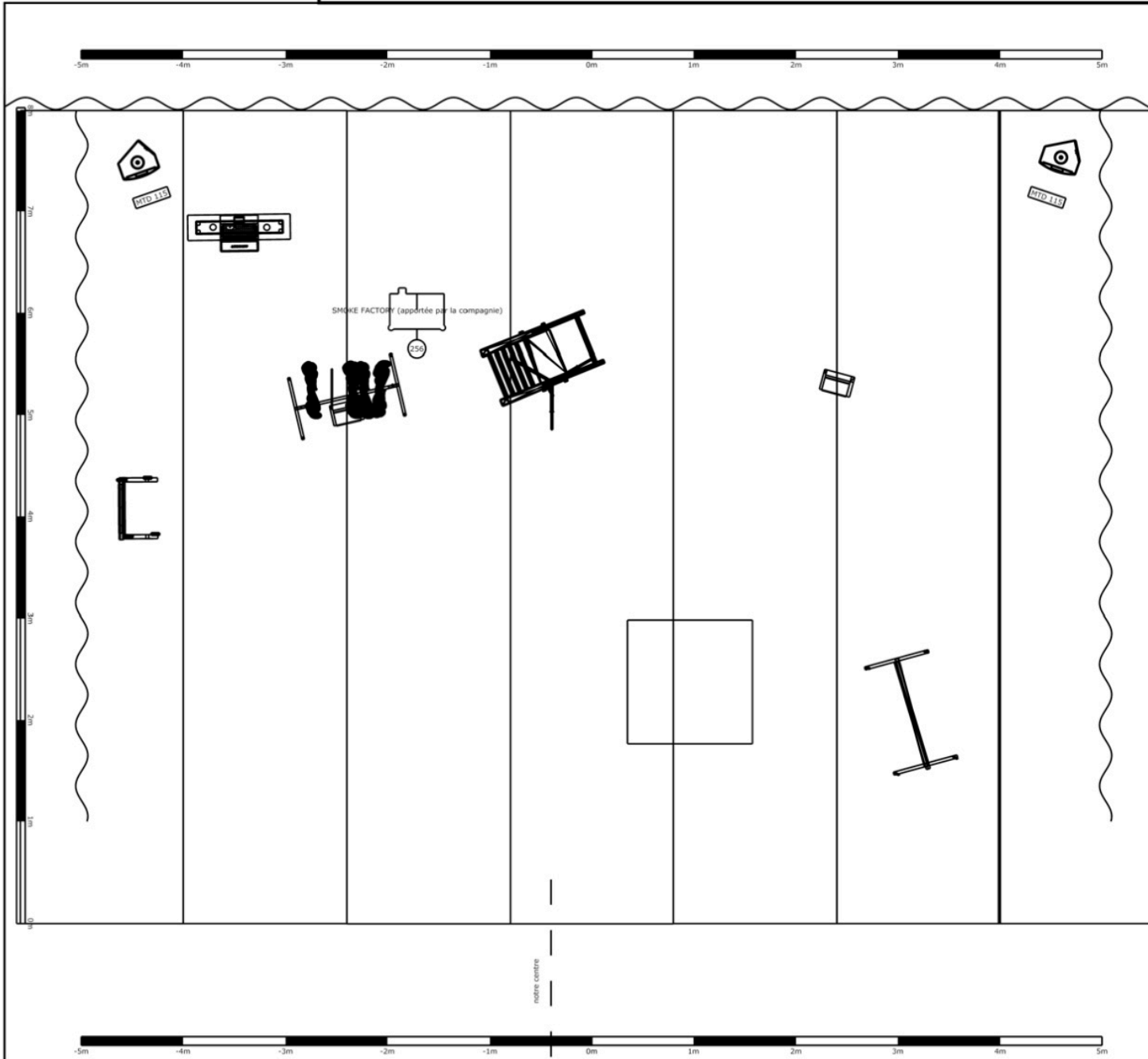
Type de matériels



Tour-Hazer II (1)



MTD 115 en plus de la facade (2)



Outre la facade, nous avons besoin de deux enceintes en fond de scène:
1 lointain jardin
1 lointain cour.

Système de diffusion : -Une paire d'enceintes au sol lointain cour et jardin, une paire d'enceintes face cour et jardin. Les enceintes seront de types MTD 115.

Un sub est plus que le bienvenu.

(Nous pouvons nous passer de table son. Les 4 enceintes peuvent directement être plugées dans notre carte son (Jack))

Ampli : adapté au système de

NYASH LLUM Fiche d'équipement

NYASH
JEUNE PUBLIC

23/11/2021

PROJECTEURS

#	projos	Évaluation
2	ACP 1KW	1kW
5	DEC. 613SX	1kW
2	DEC. 614SX	1kW
1	DEC. 713SX (apportée par la compagnie)	2kW
13	PAR 64 CP62	1kW
10	PC 1KW	1kW
2	Quartz apportés par la compagnie	1kW
1	SMOKE FACTORY (apportée par la compagnie)	0W
		36kW

GELATINES

#	Filtres	projos
1	R119	DEC. 614SX
4	L206	PC 1KW
2	L201	PAR 64 CP62
2	L200	ACP 1KW
2	L200	PAR 64 CP62
4	L195	PAR 64 CP62
2	L195	PC 1KW
4	L134	PAR 64 CP62
1	L132	PC 1KW
1	L106	PAR 64 CP62
1	L106	PC 1KW
5		DEC. 613SX
1		DEC. 614SX
1		DEC. 713SX (apportée par la compagnie)
2		PC 1KW
2		Quartz apportés par la compagnie

Accessoires

#	Référence
2	iris
5	volet 4 faces