

**1. Team:**

- 2 dancers
- 1 technician
- 1 choreographer / administrator / promoter. (where appropriate)

**2. Duration of the show:**

40 minutes without intermission

**3. Stage:**

**Minimum size of the stage: 10 meters from the right wall to the left wall on 8 meters deep (except public) and 4 meters high.**

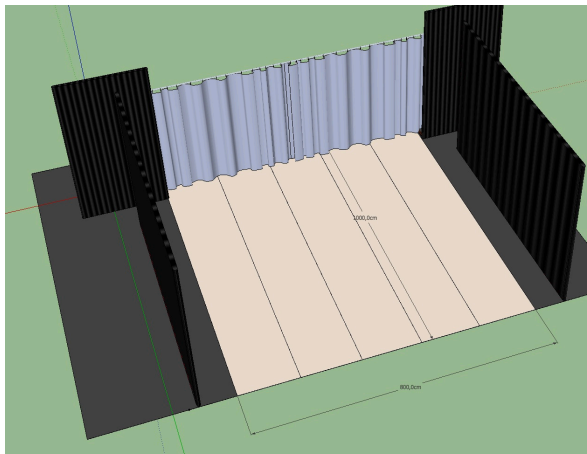
**A black background will have to completely close the back of the stage. The right and left walls must be black. -Black Box-**

**The floor must be perfectly clean.**

**If the floor is not black and in good condition, it must be covered with a black dance floor.**

**THE FLOOR MUST BE IMPERATIVELY IN WOOD !!!!!**

**If not, please notify the company**



**A back right and left exit, just in front of the cyclo will have to be arranged using black pendrillons.**

**A BLACK TAPE ROLL FOR DANCE MATS SHOULD BE SUPPLIED BY THE PLACE OF HOME !!!**

#### 4.Scenery: (brought by the company)

- 5 beige dance carpet lays of 1m60 x 8m + 1 black.
- 3 Alu profiles of 30cm x 3cm x 283cm
- 15 chairs
- a cyclo of 8m x 3m50
- a faceted ball
- a smoke machine

#### 5.Light: (27 channels 3 KW ou 31 channels 2 KW (except public light)

We ask :

- 1 lightning board
- 6 profiles 1 KW short with knives , type 613 sx juliat + 1 IRIS
- 2 profiles 1 KW medium with knives, type 614 sx juliat
- 20 PC 1KW (14 with flaps)
- 2 PARs 64 solo (cp62)
- 7 PC 2 KW with flaps
- 6 asymétric ADB ACP 1001 cyclorama
- 12 grond plates
- !!!1 DMX Front Right !!!

Gels :

- 200 : 3 ADB ACP 1001 cyclorama
- 206 : 3 pc 1kw
- 202 : 3 pc 1kw, 1 prof. 1kw
- 201 : 2 par64, 3pc 2kw, 1 prof. 1kw
- 195 : 3 pc 2kw
- 132 : 1 pc 1kw
- 106 : 1 prof. 1kw
- DIFF : R114 : 12 pc 1kw, 6pc 2kw, 6 ADB ACP 1001 cyclorama,  
R119 : 7 prof. 1kw

#### 6.Sound:

We ask :

**Broadcast system:** -A pair of left and right speakers at the front, a pair of left and right speakers to the back. The speakers will be of type MTD 112.  
- A sub (if possible)

**Sound table:** -two inputs on 2 mono jack (connected to a sound card brought by the company)

-2 stereo + sub outputs (if possible)

**Amp:** adapted to the broadcast system.

#### 7.Loges:

-1 lodge accommodating 2 people; heated, equipped with a mirror, a sink, a shower (if possible), a IRON and 2 chairs

#### 8.Planning:

**Editing:** 7 hours with 2 appliances, 1 machino (in Italian theater), 1 sound (last hour)

**Disassembling:** 1 hour loading included with 1 machino

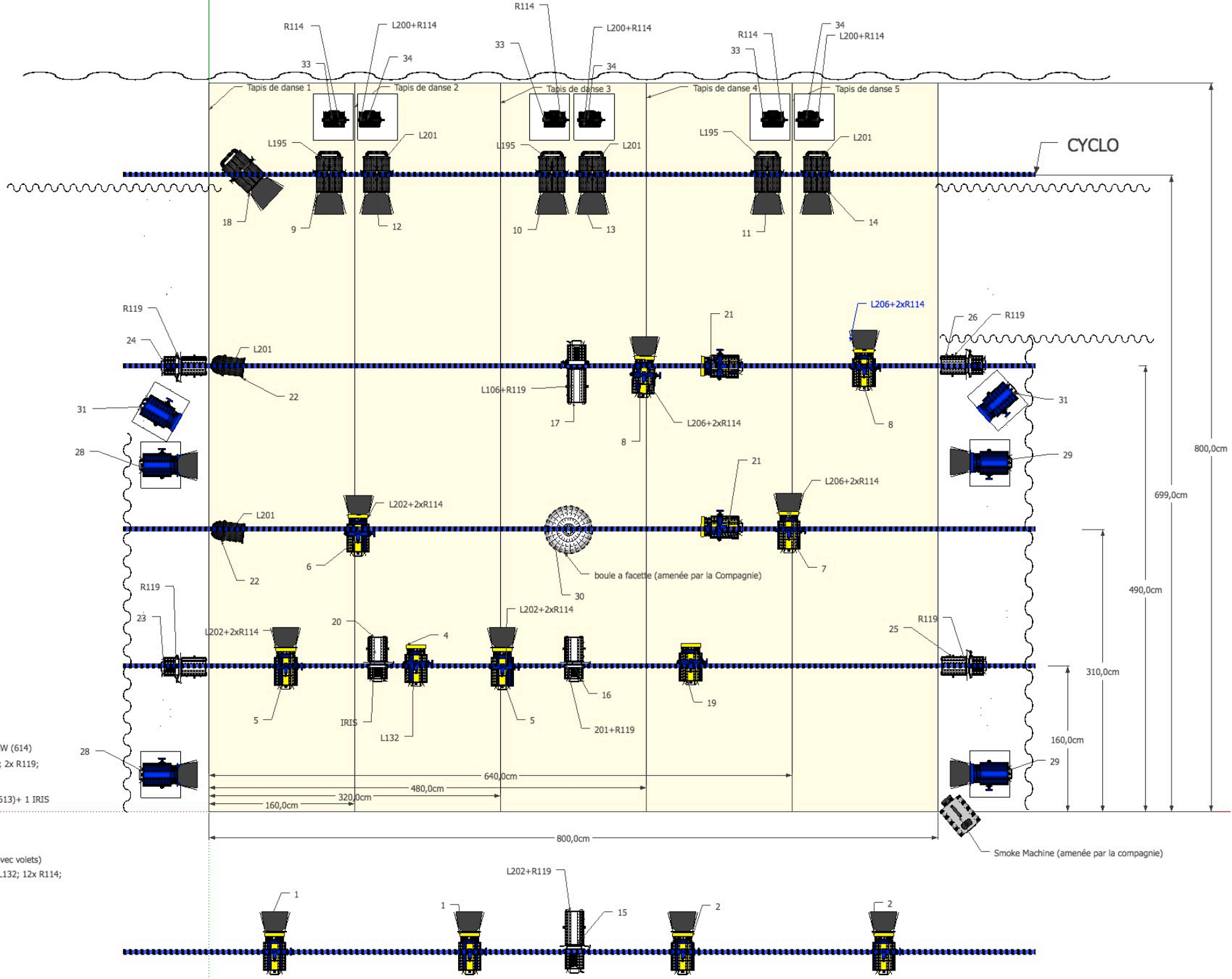
#### 9.Contact :

Fred. Vannes : 0032-477.200.356

[fred.vannes@skynet.be](mailto:fred.vannes@skynet.be)

admin : Jhadira Wiertz : +32(0)487 61 44 17

[jhadira.wiertz@nyash.be](mailto:jhadira.wiertz@nyash.be)



circuits libres: 3, 27, 32, 35...

12 Platinas